



W. Ryan Road

Right In / Right Out Full Access

Parcel 1
3.52 AC

Parcel 2
1.90 AC

Parcel 3
1.90 AC

Parcel 4
1.95 AC

Parcel 5
17.47 AC

S. 76th St.

Price List

Parcel 1	\$1,000,000
Parcel 2 & 3	\$850,000
Parcel 4	\$400,000
Parcel 5	\$1,200,000

LAND DETAILS

Lot Size:	26.8 Acers
Zoning:	R-8, C-1, A-1
Sewer/Water:	Municipal (MMSD)
Topography:	Level
Gas/Electric:	Available in Vicinity

TRAFFIC COUNTS (WIDOT)

Ryan Road:	+/- 12,800 vpd
S 76th St:	+/- 5,500 vpd

TAX INFORMATION

Tax Key:	897-9996-000
Taxes (2013):	\$1,695.92

DEMOGRAPHICS (2014)

	1-Mile	3-Mile	5-Mile
Population:	798	22,846	68,981
Households:	330	8,323	28,061
Median HHI:	\$70,928	\$83,029	\$69,634

S. 76th St.

W. Ryan Road

Parcel 1
3.52 AC

Parcel 2
1.90 AC

Parcel 3
1.90 AC

Parcel 4
1.95 AC

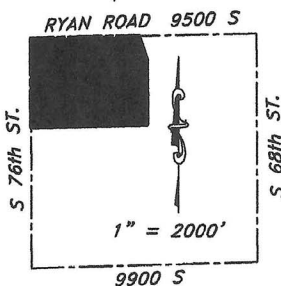
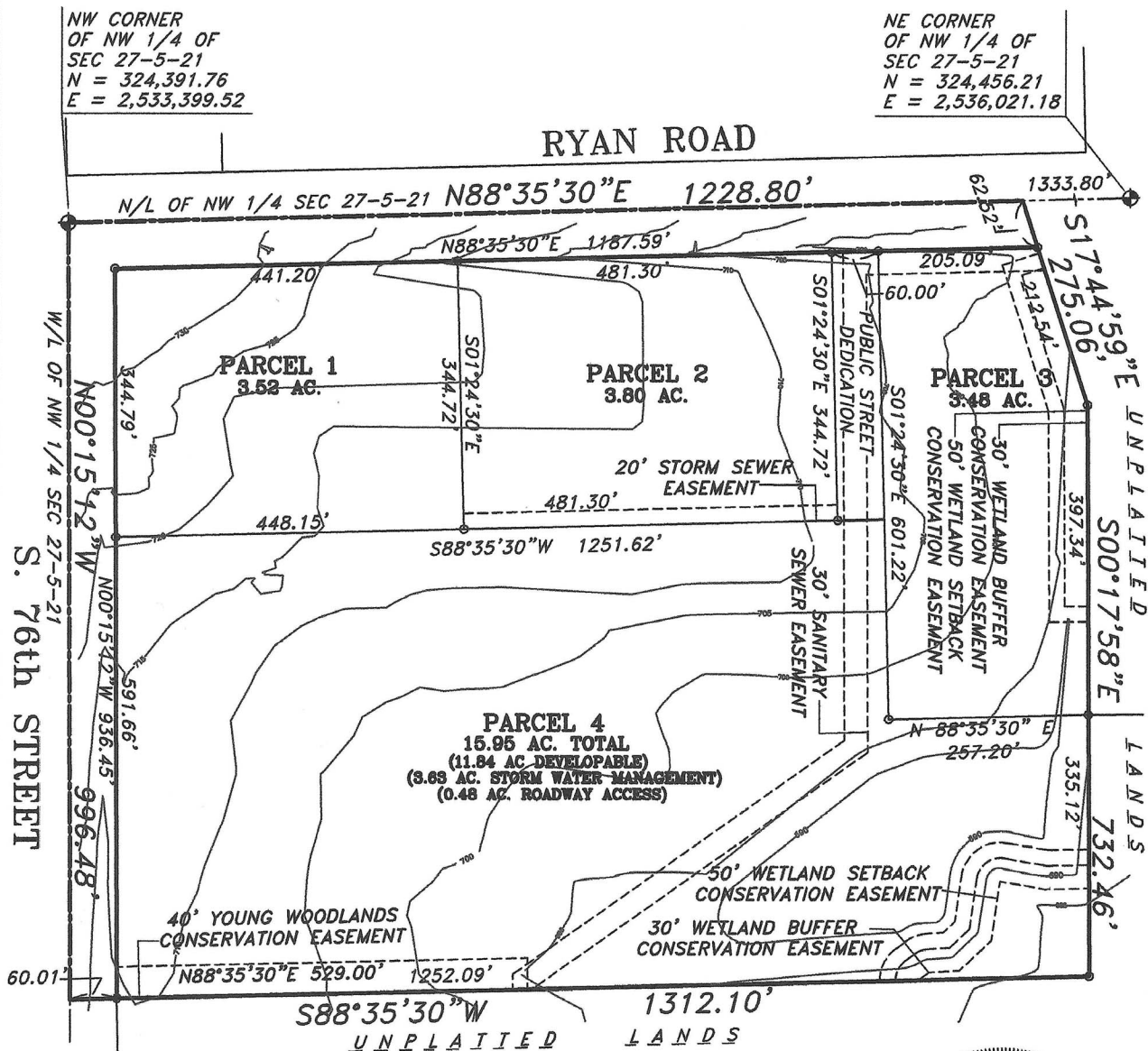
Parcel 5
17.47 AC

R-8

A-1

South-East Corner of S. 76th St & Ryan Rd

BEING A PART OF THE NW 1/4 OF THE NW 1/4 OF SECTION 27, TOWNSHIP 5 NORTH, RANGE 21 EAST, IN THE CITY OF FRANKLIN, MILWAUKEE COUNTY, WISCONSIN.

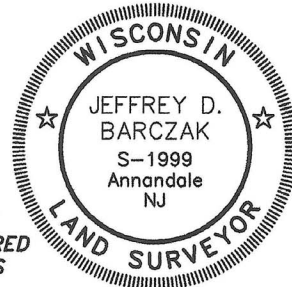
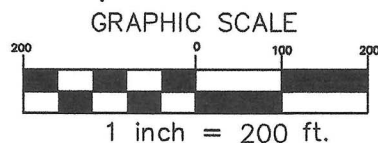


VICINITY SKETCH
NW 1/4 27-5-21

SURVEYOR:
JEFFREY D. BARCZAK
2432 TRENTON PARK LN
RALEIGH, NC. 27607
PH (414) 429-4865
EMAIL BARCZAKENGINEERING@GMAIL.COM

NRPP PREPARED BY BHE
ENVIRONMENTAL REPORT
DATED DEC. 20th, 2011

PARCEL 4 GRANTS ALL RIGHTS TO USE
STORM WATER MANAGEMENT POND IN
SOUTHEAST CORNER OF PARCEL 4 FOR
FULLY DEVELOPED PARCELS 1, 2 AND 3
AND GRANTS ANY MODIFICATION REQUIRED
IF NECESSARY TO FULLY DEVELOP LOTS
1, 2 AND 3.



NOTE:
○ DENOTES 1"x24" IRON PIPE 1.13 LBS
PER LINEAL FEET SET AT ALL LOT
CORNERS UNLESS OTHERWISE NOTED
BEARINGS ARE REFERENCED TO THE
WISCONSIN STATE PLANE CO-ORDINATE
SYSTEM SOUTH ZONE.

O'MALLEY DEVELOPMENT

890 Elm Grove Rd | Suite 207-A | Elm Grove, WI 53122 | (414) 573-0855 | www.omalleydevelopment.com

STATE OF WISCONSIN BROKER DISCLOSURE

Wisconsin law requires all real estate licensees to provide the following information to prospective customers

Prior to negotiating on your behalf, the Broker must provide you the following disclosure statement:

BROKER DISCLOSURE TO CUSTOMERS

You are the customer of the broker. The broker is either an agent of another party in the transaction or a subagent of another broker who is the agent of another party in the transaction. The broker, or a salesperson acting on the behalf of the broker, may provide brokerage services to you.

Whenever the broker is providing brokerage services to you, the broker owes you, the customer, the following duties:

- ⇒ ▪ The duty to prove brokerage services to you fairly and honestly.
- ⇒ ▪ The duty to exercise reasonable skill and care in providing brokerage services to you.
- ⇒ ▪ The duty to provide you with accurate information about market conditions within a reasonable time if you request it, unless disclosure of the information is prohibited by law.
- ⇒ ▪ The duty to disclose to you in writing certain material adverse facts about a property, unless disclosure of the information is prohibited by law (see "Definition of Material Adverse Facts" below).
- ⇒ ▪ The duty to protect your confidentiality. Unless the law requires it, the broker will not disclose your confidential information of other parties.
- ⇒ ▪ The duty to safeguard trust funds and other property the broker holds.
- ⇒ ▪ The duty, when negotiating, to present contract proposals in an objective and unbiased manner

and disclose the advantages and disadvantages of the proposals.

Please review this information carefully. A broker or salesperson can answer your questions about brokerage services, but if you need legal advice, tax advice, or a professional home inspection, contact an attorney, tax advisor, or home inspector.

This disclosure is required by section 452.135 of the Wisconsin Statutes and is for information only. It is a plain language summary of a broker's duties to a customer under section 452.133 (1) of the Wisconsin Statutes.

CONFIDENTIALITY NOTICE TO CUSTOMERS

Broker will keep confidential any information given to broker in confidence, or any information obtained by broker that he or she knows a reasonable person would want to be kept confidential by law, or you authorize the broker to disclose particular information. A broker shall continue to keep the information confidential after broker is no longer providing brokerage services to you.

The following information is required to be disclosed by law.

1. Material adverse facts, as defined in section 452.01 (5g) of the Wisconsin statutes (see "definition of material adverse facts" below).
2. Any facts known by the broker that contradict any information included in a written inspection report on the property or real estate that is the subject of the transaction. To ensure that the broker is aware of what specific information below. At a later time, you may also provide the broker with other information that you consider to be confidential.

CONFIDENTIAL INFORMATION:

NON-CONFIDENTIAL INFORMATION

CONSENT TO TELEPHONE SOLICITATION

I/We agree that the Broker and any affiliated settlement service providers (for example, a mortgage company or title company) may call our/my home or cell phone numbers regarding issues, goods and services related to the real estate transaction until I/we withdraw this consent in writing. List

Home/Cell Numbers:

SEX OFFENDER REGISTRY

Notice: You may obtain information about the sex offender registry and persons registered with the registry by contacting the Wisconsin Department of Corrections on the internet at <http://offender.doc.state.wi.us/public/> or by phone at 608-240-5830.

DEFINITION OF MATERIAL ADVERSE FACTS

A "material adverse fact" is defined in Wis. Stat. 452.01 (5g) as an adverse fact that a party indicates is of such significance, or that is generally recognized by a competent licensee as being of such significance to a reasonable party that it affects or would affect the party's decision to enter into a contract or agreement concerning a transaction or affects or would affect the party's decision about the terms of such a contract or agreement. An "adverse fact" is defined in Wis. Stat. 452.01 (1e) as a condition or occurrence that a competent licensee generally recognizes will significantly adversely affect the value of the property, significantly reduce the structural integrity of improvements to real estate, or present a significant health risk to occupants of the property, or information that indicates that a party to a transaction is not able to or does not intend to meet his or her obligations under a contract or agreement made concerning the transaction.

O'MALLEY DEVELOPMENT

890 Elm Grove Rd | Suite 207-A | Elm Grove, WI 53122 | (414) 573-0855 | www.omalleydevelopment.com